



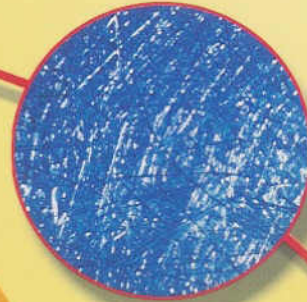
楊氏玻璃纖維公司

YEUNG'S FIBERGLASS COMPANY

(Government Approved Specialist Contractor)

RAISING FIBERGLASS STANDARDS

**YOUR  
PARTNER  
for  
FIBERGLASS**



Building and Construction Products

玻璃纖維產品 — 建築工程系列

<http://www.fiberglass.com.hk>

Comprehensive  
products & services  
to support  
your design and ideas  
in Glassfibre  
Reinforced Plastic  
(G.R.P.)



# Introduction of "YEUNG'S"

**YEUNG'S OFFERS AN OUTSTANDING RANGE OF TOP-QUALITY FIBERGLASS PRODUCTS MANUFACTURED TO THE HIGHEST STANDARDS AND DESIGNED TO MEET THE MOST DEMANDING SPECIFICATIONS.**

YEUNG'S is a fiberglass product manufacturer and installer in Hong Kong since 1983. Our skills and experience in design, manufacture, installation and maintenance of fiberglass products lead us become one of the leading Hong Kong fiberglass manufacturer. We are confident that we provide the best fiberglass and service for your unique need.

In July 1986, we became one of the approved specialist suppliers of fiberglass products for the Hong Kong Government.

As a fiberglass specialist, we have devoted ourselves to provide the best quality products and services to our clients. Our products in Hong Kong are produced in well equipped working environment with highly advanced production facilities under rigid quality control system to ensure the quality of our products are the best in Hong Kong and Asia.



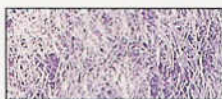
We Perform Routine Testing to Ensure Our Products Meet Relevant International Standard

## YEUNG'S Specializes In Fiberglass Fabrication For:

- |                                |            |                                  |        |
|--------------------------------|------------|----------------------------------|--------|
| • Architectural Cladding       | 大廈外牆裝飾     | • False Ceiling                  | 裝飾天花   |
| • Footbridge/walkway Cover     | 行人天橋/行人路上蓋 | • Air Duct                       | 風槽     |
| • Check-in Counter             | 出入境櫃檯      | • Canopy                         | 大廈遮蓬   |
| • Waffle Mould                 | 石屎模        | • Guard House                    | 看更亭    |
| • Hoarding                     | 地盆圍街板      | • Sculpture                      | 雕刻品    |
| • Decorative Mouldings/Feature | 裝飾花線       | • Portable Toilet                | 流動廁所   |
| • Refuse Collection Point      | 垃圾收集站      | • Litter Bin                     | 垃圾箱    |
| • Water Tank                   | 儲水箱        | • Seats/Bar Seats                | 坐椅/快餐椅 |
| • Planters                     | 花盆         | • Basketball Board               | 籃球板    |
| • Decorative Columns           | 裝飾柱        | • Any design to your requirement | 任何生動設計 |

# YEUNG'S fiberglass .... 楊氏玻璃纖維

...DESIGNED TO MEET THE REQUIREMENTS OF THE HONG KONG BUILDING AND CONSTRUCTION INDUSTRY FOR OVER 15 YEARS



## What is G.R.P.?

The formal name for FIBERGLASS is called Glassfibre Reinforced Polyester or GRP/FRP in short. GRP is a strong and durable material, they can be applied in a wide range of building and construction applications.

G.R.P. are structural products comprising a combination of dissimilar constituent materials. The overall engineering performance characteristics of a finished composite far exceed those achievable from any of the individual components used in isolation.

GRP generally consists of high tensile strength glassfibre protected by high quality unsaturated polyester resin. The term composite more accurately describes the products manufactured by today's fiberglass industry in Hong Kong. High performance resins (normally polyester or epoxy) are combined in a mould with high strength fiberglass to form a final product.

WE ARE CONFIDENT THAT OUR CRAFTSMANSHIP WILL FULFILL YOUR UNIQUE REQUIREMENTS.

## Benefits of G.R.P.

GRP is the ideal material for infrastructure uses and all types of specialist construction. The major benefits of GRP can be summarised as:

- Easily moulded to any complex shapes
- High design Flexibility
- High Strength
- Lightweight
- Excellent strength-to-weight ratios
- Extremely strong, durable
- Weather-resistant
- Corrosion Resistance
- Vandal resistant
- Requires minimal maintenance
- Non-conductive - Thermally and Electrically
- Accidental damage can be easily repaired
- Aesthetic appearance and corrosive resistant
- Available in a wide range of colours
- Ease of Installation
- Easily designed to meet specific criteria: impact resistance, insulation properties, fire resistance, etc.

GRP is suitable for a vast range of applications, including walkway covers, footbridge covers, cladding panels, roof sheetings, guard houses, water tanks, decorative planters, signages, etc.

# GRP in the Construction Industry 玻璃纖維建築工程

PRODUCTS OF YEUNG'S HAVE BEEN TESTED AND APPROVED BY WIDELY ACCEPTED INTERNATIONAL STANDARDS.



Air Duct-Tze Wan Shan Shopping Centre  
慈雲山中心冷氣槽



Decorative Column Hung Hom Bay  
紅磡灣裝飾柱



Decorative Panel at Ocean Park  
海洋公園裝飾板

## YEUNG'S - Meeting the highest Specifications

YEUNG'S Fiberglass products are manufactured to demanding specifications from the highest quality materials. All of our quality supplies are accredited with the following International Standards:

MATERIAL / LAMINATE	RELEVANT INTERNATIONAL STANDARDS
<b>Glassfibre (E-Glass Roving)</b>	BS 3396 Part 1:1996 Specification for loom-state fabrics BS 3396 Part 2:1995 Specification for de-sized fabrics Specification for finished fabrics for use with polyester resin systems BS 3396 Part 3:1995 Woven Roving fabrics for "E" glass fibber for the reinforcement of Polyester resin. BS 3749:1996 Glass Fiber roving for the reinforcement of polyester and epoxide Resin system. BS 3691
<b>Polyester Resin GRP Laminate</b>	BS 3532:1995 Method of specifying unsaturated polyester resin systems BS 2782:1976 Mechanical Properties Test on Glass Reinforced Plastic
<b>GRP Potable Water Tank</b>	BS 6920 Suitability of non-metallic products for use in contact with water intended for human consumption with regard to their effect on the quality of water BS 4994:1987 Specification for design and construction of vessels and tanks in reinforced plastics SS 245:1981 Hydrostatic Pressure Test for water tank

Code of Practice of Wind Effect in HK 1983

### FIRE RATED REQUIRMENTS (Optional)

- Fire Rated to
  - BS 476 Part 3 External fire exposure roof test
  - BS 476 Part 4 Non-Combustibility Test for Materials
  - BS 476 Part 6 Method of test for fire propagation for products
  - BS 476 Part 7 Method of test to determine the classification of the surface spread of flame of products

\* Meet the requirements for the Hong Kong Buildings Department (HKBD)

### WATER TANK

- Water Research Centre (WRc) in the United Kingdom Approved Products
- Hong Kong Water Authority (HKWA) Approved Products for GRP Potable Water Tank

# Manufacturer's Product Data 物料數據

## Mechanical & Physical Properties of YEUNG'S G.R.P. Laminates

Testing Based on BS 2782 and carried out by the University of Hong Kong

Material	Grade	Specific	Elastic	Proof Strength		Impact	Specific	Specific
		Gravity	Modulus	Tensile	Compressive	Strength	Strength	Modulus
						KJ/m <sup>2</sup>	MPa	GPa
Mild Steel	B.S.15	7.8	207	240	240	50	31	27
Aluminium Alloy	HE15WP	2.7	69	417	417	25	154	26
Stainless Steel	316	7.92	193	241	241	1356	30	34
GRP	35%	1.88	250	171	102	79.4	250	12.81

TABLE 1 - Indicative Figure of Mechanical Properties of YEUNG'S GRP Material compared with other construction materials

\*Glass content by weight

## Physical Properties

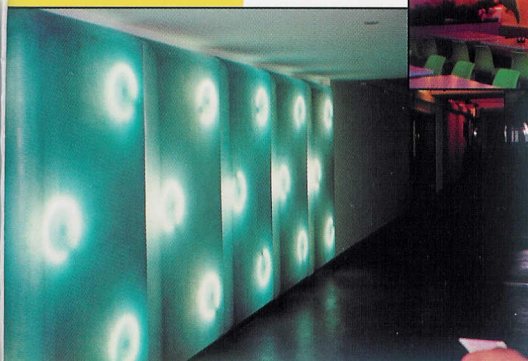
Test	Method	Result	
		Figure	Unit
1. Glass Content	BS 2782 Part 10 Method 1002	35	%
2. Flexural Strength / Elastic Modulus	BS 2782 Part 10 Method 1005	250	N/mm <sup>2</sup>
3. Specific Gravity	BS 2782 Method 620A	1880	kg/m <sup>3</sup>
4. Tensile Strength	BS 2782 Part 10 Method 1003-1983	171	N/mm <sup>2</sup>
5. Compressive Strength	BS 2782 Method 303B	102	N/mm <sup>2</sup>
6. Barcol Hardness	BS 2782 Part 10 Method 1001	35	
7. Impact Strength	BS 6206	79.4	kJ/m <sup>2</sup>
8. Flexural Modulus / Young's Modulus	BS 2782 Part 10 Method 1005	12810	N/mm <sup>2</sup>
9. Tensile Modulus	BS 2782 Part 10 Method 1003-1983	12600	N/mm <sup>2</sup>
10. Interlaminar shear strength	BS 2782 Method 340A	19.6	N/mm <sup>2</sup>
11. Thermal Conductivity	BS 874 Part 2 - 1986 Sec 2.1	0.22	W/m deg C
12. Thermal Expansion	ASTM D696-79 or similar	2.16 x 10 <sup>-5</sup>	°C
13. Water Absorption	BS 2782 Part 4 Method 430A-1983	0.18	%
14. QCT Bilster Test	1000 Hours at 55 deg C	Satisfactory	
15. Water Quality (For Tanks Only)	BS 6920	PASS	

TABLE 2 - Manufacturer's Product Data of physical properties for YEUNG'S GRP Material

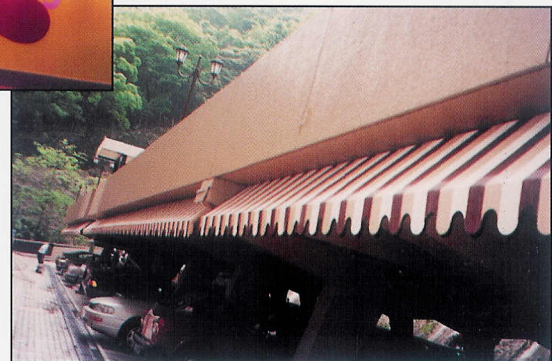
6



Decorative Feature at Fairwood Restaurant  
大快活快餐裝飾件



Decorative Light Feature  
裝飾燈柱



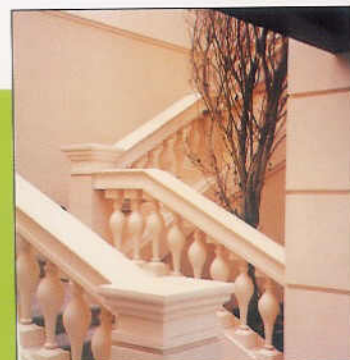
Awning at Woodland Height  
半山怡園雨水篷

# Fiberglass Architectural Claddings

玻璃纖維  
大廈外牆裝飾

Traditional building materials like plywood aluminium panel and concrete are rapidly replaced by fiberglass due to its unique properties. Fiberglass Commercial Cladding is a good example. Mechanical stress tolerance put GRP in the class of structural materials. If comparisons are made on an equal weight basis, GRP is one of the strongest structural materials available.

In terms of hardness, on the Moh scale, GRP lies between 6 and 7. For perspective, talc is rated 1 and diamonds at about 10.



5-Black's Link  
布力徑5號



Hunghom Plaza, Hunghom  
紅磡廣場



New Century Plaza, Wan Chai  
灣仔新世紀廣場



Sun Plaza, Tsimshatsui  
尖沙咀太陽廣場



Fanling Centre  
粉嶺中心



Peng Chau Market  
坪洲街市



Kwei Tei, Fanling  
粉嶺軍地



Kwei Tei, Fanling  
粉嶺軍地



Sun Plaza, Tsimshatsui  
尖沙咀太陽廣場



Hunghom Plaza Hunghom  
紅磡廣場



New Century Plaza, Wanchai  
灣仔新世紀廣場



Kwei Tei, Fanling  
粉嶺軍地



Internal Shopping Podium - Shenzhen  
深圳商場



5 Black's Link  
布力徑5號



Redevelopment of Yau Tong Phase 5  
油塘邨重建第5期



Cheung Shan Wan Phase 3  
長沙灣三期

**YEUNG'S OFFER A WIDE RANGE OF HIGH PERFORMANCE FIBERGLASS FOR GRP FOOTBRIDGE COVER, TANKS, GUARD HOUSE, CLADDING AND OTHER TAILOR-MADE PRODUCTS WITH THE HIGHEST QUALITY**

# Fiberglass Walkway Cover

玻璃纖維  
行人路上蓋



## Affordable Walkway and Canopy Cover System

In recent years, the applications of YEUNG'S GRP walkway and canopy covers provided a bright solution to the problems inherent in traditional metal / polycarbonate / zinc-coated plate walkway covers which were dark, require constant maintenance and with an unpleasant industrial appearance.

YEUNG'S walkway and canopy cover system present attractive and affordable systems without high maintenance costs and safety concerns associated with glass or metal systems.

Polycarbonate covers break under high pressure or sudden impact, e.g. an object dropped from height. Zinc-coated plate cover will become rusty and cause uneconomical repairs. However, GRP walkways are strong, durable and can be finished in various colours, depending on your preference.



Kam Ying Court, Ma On Shan  
馬鞍山錦英苑



Tai Wo Estate Walkway Cover  
太和邨行人路上蓋



Walkway Cover adjacent to Hong Kong Convention and Exhibition Centre Extension  
Phase 香港會議展覽中心側之行人路上蓋



Walkway Cover adjacent to Hong Kong Convention and Exhibition Centre Extension  
Phase 香港會議展覽中心行人路上蓋



Toilet Cover  
洗手間上蓋



Walkway Cover at Woodland Height  
半山怡園行人路上蓋





## EXPLOITING THE POTENTIAL OF FIBERGLASS IN WALKWAY COVER



Carpark Cover  
停車場上蓋



Tin Shui Wai Walkway Cover  
天水圍行人路上蓋



Walkway Cover adjacent to Hong Kong Convention and Exhibition Centre Extension Phase  
香港會議展覽中心擴建中心側之行人路上蓋



Tin Shui Wai Walkway Cover  
天水圍行人路上蓋



Podium at Yau Tong Redev. Phase 5  
油塘邨重建5期平台



Podium at Yau Tong Redev. Phase 5  
油塘邨重建5期平台

In the 1990's, GRP walkway cover was widely promoted as a durable and maintenance free material. During many years of research and development, YEUNG'S has clearly demonstrated the improvements that arise from using matched polyester resins and gelcoat system in walkway structure. That is why walkway covers are so popular in Hong Kong construction industry. The following points are comparison between traditional steel covers to fiberglass walkway covers.

### Improved strength and rigidity.

- Improved strength to weight ratio
- Better appearance
- Better performance
- Better safety factors

### Improved long term performance in outdoor environment.

- Improved fatigue resistance
- Improved impact resistance
- Better performance in extreme climatic conditions
- Very low maintenance cost

# Fiberglass Footbridge Cover

玻璃纖維  
行人天橋上蓋

COMPARED TO OTHER BUILDING MATERIALS USED FOR BUILDINGS AND CONSTRUCTION, FIBERGLASS IS MORE COMPETITIVE IN COST, WEIGHT, STRENGTH AND CHEMICAL RESISTANCE, MAKING IT A FAVORITE CHOICE FOR ARCHITECTS AND DESIGNERS.



Footbridge Cover Adjacent to Western Recreation Centre, Sheung Wan  
西區室內運動場側行人天橋上蓋



Tsuen Wan Ferry Pier, Footbridge Cover  
荃灣碼頭行人天橋上蓋



Tsuen Wan Interchange, Footbridge Cover  
荃灣交匯處行人天橋上蓋



Tsuen Wan Footbridge Cover (To CityHall)  
荃灣大會堂行人天橋上蓋



Tsuen Wan Footbridge Cover (To Shopping Mall)  
荃灣大會堂行人天橋上蓋



Tsuen Wan Footbridge Cover (To CityHall)  
荃灣大會堂行人天橋上蓋



# ATIONS, YEUNG'S FIBERGLASS IS HIGHLY WHEN THE EXCELLENT CHOICE FOR



Yau Tong Redevelopment Footbridge Link Between Phase 1 to 5  
油塘邨重建5期（連接第一期至第五期）行人天橋上蓋

The use of G.R.P. in footbridge covers is one of the excellent alternative materials to traditional reinforced concrete or metals. Its high tensile strength properties lead fiberglass lay an important role in construction industry. Many architects choose fiberglass because it can be moulded into virtually any shape and the number of joints is gradually reduced.



Yau Tong Redevelopment Footbridge Link Between Phase 1 to 5  
油塘邨重建5期（連接第一期至第五期）行人天橋上蓋



Hung Hom Bay Pier  
紅磡灣碼頭



Shun Tak Footbridge Link  
信德中心行人天橋上蓋



Footbridge Cover Adjacent to Lai King MTR Station  
荔景地鐵站行人天橋上蓋

# Fiberglass Decorative Mouldings

玻璃纖維  
裝飾花線

## YEUNG'S® FIBERGLASS-REINFORCED PLASTIC (FRP) BUILDING PRODUCTS

YEUNG'S® Fiberglass-Reinforced Plastic (FRP) Building Products are designed to provide maintenance-free long service life in corrosive industrial environments. They meet stringent weather, corrosion, and fire resistance requirements.

Engineered resins give the products a high resistance from acids, alkalis, solvents, and 100% humidity. Proprietary glass reinforcements give them exceptional strength and stiffness. These components combine to make composite products that are not only light in weight but are also exceptionally strong and stiff.

Yeung's GRP Roofing and Siding Panels match various traditional metal profiles and cement asbestos panel profiles. Yeung's cladding/moulding panels are recognized fire retardant/non-combustibility products in optional basis. For some of the ratings/classifications of these products please refer to Page 5 of this brochure.

13



5 Black's Link  
布力徑5號



Kwai Shing East Phase 2  
葵盛東邨二期



Cathay Pacific Lounge, HK International Airport  
香港國際機場國泰頭等候機室



5 Black's Link  
布力徑5號



Wang Tau Hom Estate Phase 14  
橫頭嶺邨重建14期



Kwai Shing East Phase 2  
葵盛東邨二期

# Fiberglass Decorative Features

玻璃纖維  
裝飾模具/裝飾件



Many modern buildings include fibreglass as decorative feature to enhance the overall image and outlook of a building and strength its value. Yeung's Fiberglass will manufacture all these parts for you whether one off or volume production.

In many outdoor environments you can select to use fibreglass as a suitable alternative to stainless steel. In addition, the use of fibreglass can be a suitable alternative to many other materials due to the costs of tooling and the strength considerations.

Often production runs of small quantities can be undertaken economically using fibreglass.



Moulding Feature at Tsimshatsui Centre  
尖沙咀中心售樓部



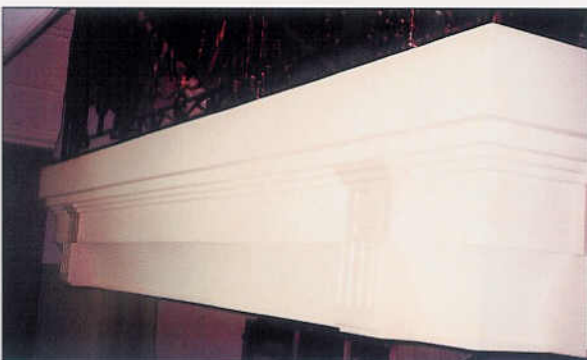
Moulding Feature at Tsimshatsui Centre  
尖沙咀中心售樓部



No.1 Broadcast Rd  
廣播播1號



No.1 Broadcast Rd  
廣播播1號



Moulding Feature at Tsimshatsui Centre  
尖沙咀中心售樓部



Moulding Feature at Tsimshatsui Centre  
尖沙咀中心售樓部

# Fiberglass Guard House - Standard Size

玻璃纖維  
看更亭(標準型號)



YF-1



YF-1 with Sun Cover (Special Colour)



GH-3 with Sun Cover and Protective Mesh



GH-1 with Sun Cover

## GUARD HOUSES DESIGNED TO THE FOLLOWING INTERNATIONAL DESIGN STANDARDS:

- BS 4549:Part 1
- BS 3396
- BS 3479
- Fire Retardant to BS 476 Part 7 Class 1 and 2, in accordance with Building Regulations 1976
- Fixings are SS A4 316 Grade Screws



GH-8B (Special Colour)



SH-1

## Standard Size Guard House

Model No.	Size (mm)
YF-1	1500 x 1000 x 2150mmH
SH-1	1250 x 1250 x 2100mmH
GH-1	1520 x 1220 x 2250mmH
SH-2	2350 x 1250 x 2100mmH
GH-2	2340 x 1520 x 2350mmH
GH-3	3460 x 1520 x 2350mmH
GH-4	2820 x 2340 x 2350mmH
GH-6A	4120 x 2340 x 2350mmH
GH-6B	3460 x 2820 x 2350mmH
GH-8A	5420 x 2340 x 2350mmH
GH-8B	4580 x 2820 x 2350mmH
GH-10A	6720 x 2340 x 2350mmH
GH-10B	5700 x 2820 x 2350mmH

Sizes of Sun Cover are available upon request



GH-10A with Sun Cover



GH-2 with Sun Cover



GH-1 and SH-1



GH-6 with Sun Cover

# Fiberglass 玻璃纖維看更亭(特別定製) Custom-made Guard House

## CHARACTERISTICS :

- We use durable, heavy-duty fiberglass
- The panels were tested and approved by Hong Kong University Civil Engineering Department for strength
- Light, high quality external finish, easy to clean
- The flexibility in design allows to set up various sizes and shapes for your own requirement
- Ideal for car-park entrance, security counters and tool collecting points
- Over 15 standard sizes available or can be tailor-made for your unique requirement
- Standard Size Model can be delivered within 1 week
- All Fiberglass Guard Houses are MADE IN HONG KONG with raw materials directly imported from UNITED KINGDOM and AUSTRALIA.



Lai King Government Quarter  
萊景政府宿舍



Clearwater Bay  
清水灣



Pok Fu Lam Garden  
佛扶林花園



Kwai Chung Cargo Terminal  
葵涌貨櫃碼頭



Tuen Mun Highway  
屯門公路



Baguio Villa  
碧瑤灣



Chinese University of Hong Kong  
香港中文大學



Canel Road East  
堅拿道東天橋底



Chung On Estate Radio Equipment House  
頌安邨電訊器材屋

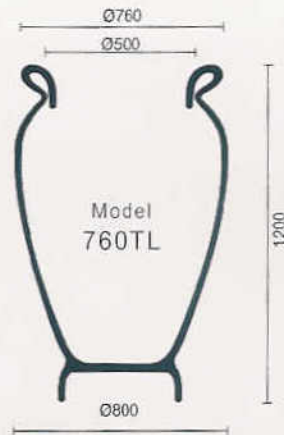
# Fiberglass 玻璃纖維花盆(標準型號) Planters - Standard Size

YEUNG'S GRP Planters provide a remarkably useful combination of physical properties that contribute significantly to care-free durability in widely divergent environments, including hostile situations, and does it at low cost.

It is chemically resistant against a myriad of compounds and practically all household chemicals. G.R.P. is rated in the trade literature as having "Good" to "Excellent" resistance to acid attack and "Fair" to "Good" against alkali attack.

Bacterial and fungi growth are not supported by G.R.P Planters., hence, it won't mildew, rot, nor even degrade in their presence. Blows and bumps that would permanently dent or wrinkle sheet metal or concrete, leave the G.R.P. unscratched. Cost effectiveness of G.R.P. when compared to other planters, more conventional materials will vary from project to project. In most cases G.R.P. has proven to be a very cost-effective material.

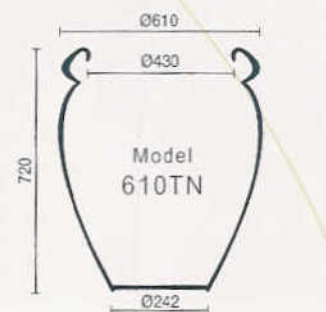
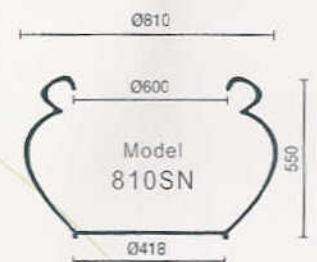
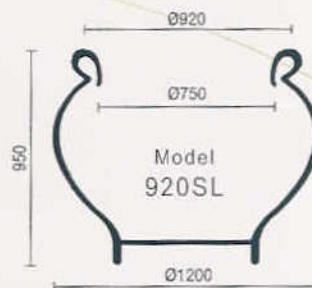
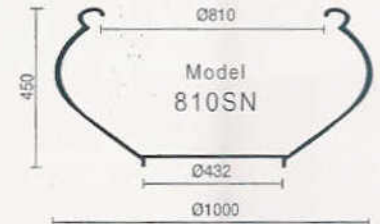
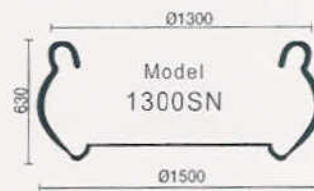
17



760TL



(Left to Right) 810SN, 760TL, 610TN





# Fiberglass Custom-made Planters

玻璃纖維  
花盆(特別定製)



Fiberglass planters are manufactured using the "spray-up" and "hand lay-up" process. Interiors and exteriors are constructed from glass reinforced, epoxy vinyl ester resin, using matched moulds to make various shapes to match your requirements. They are most welcome by many shopping mall and commercial podium as well. Some moveable planters for instance, the pear-shaped planters, required no painting, no special maintenance and can be relocated wherever they are needed.



Central Government Office  
香港中環政府總部



Peng Chau Market  
坪洲街市



Central Government Office  
香港中環政府總部



Kowloon Station Square  
九龍站淡日展平台



MTR Headquarter  
地鐵公司總部



Tse Wan Shan Centre  
慈雲山中心



Telford Plaza  
德輔道中



MTR Headquarter  
地鐵公司總部



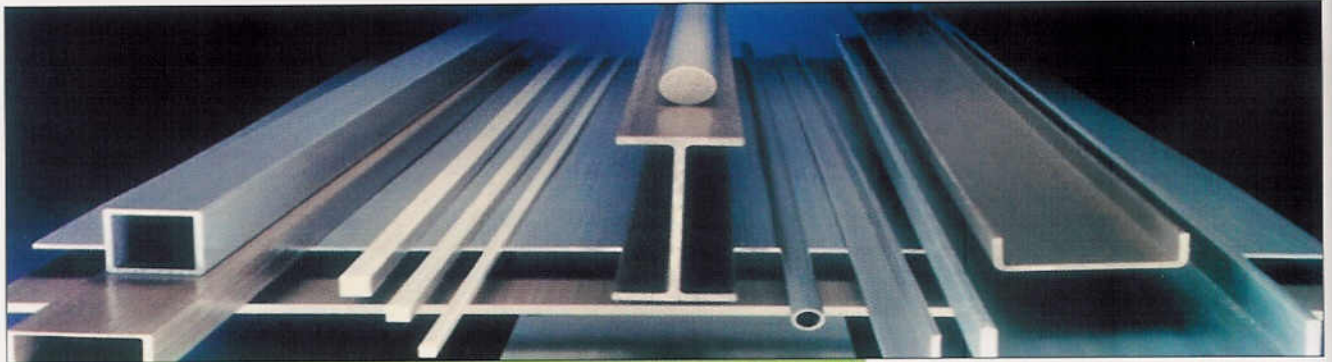
Telford Plaza  
德輔道中



Kwun Tong Shopping Centre  
觀塘廣場

# Fiberglass 玻璃纖維渠務產品

## Grating, Channel, Ladder & Trench Cover



GRP Structural Member

YEUNG'S provides two basic types of fiberglass-reinforced-plastic (FRP) gratings: compression-molded (square mesh and rectangular mesh) and pultruded. Each type provides the fundamental advantages that make GRP a better investment than steel for most applications:

- maintenance free
- lightweight, easy to install
- doesn't fatigue or creep, stays flat for safe walking
- nonconducting and nonsparking (high-conductance, anti-static grating is available)

In addition, pultruded gratings provide a high degree of strength and corrosion-resistance not found in conventional gratings.

The primary considerations that affect grating selection are:

### Load/Deflection:

This is normally the starting point for grating selection. The type of grating (rectangular-mesh or square mesh) interrelates with the layout of the support structure because of the difference in span directions.

### Chemical Compatibility:

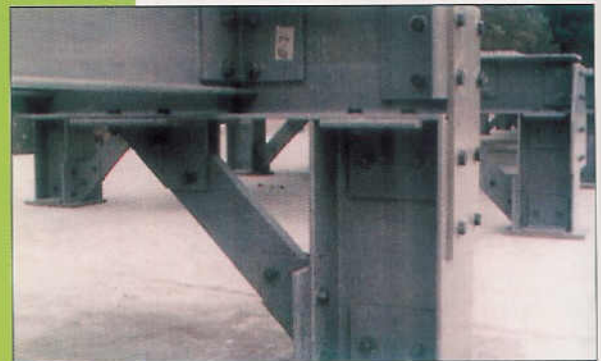
YEUNG'S gratings offer excellent corrosion resistance within the capability of the specific resin system used. Resin systems, however, have different chemical compatibilities.

### Fire - Retardance:

Fire-retardance is a function of the resin system used for the grating.

### Special Considerations:

There are options available on special colours, resin systems and non-skid surfaces.



GRP Structure

19

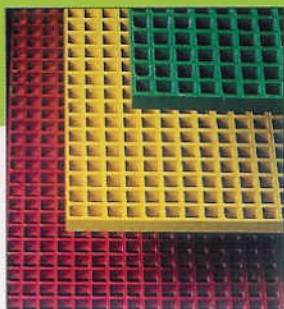




## GRP Grating



GRP I-Beam Grating



Mesh Flooring



Anti-Slip + Exture Grating

## GRP/FRP Structure



GRP Structure to Grating

## GRP Cat Ladder



GRP Cat-Ladder

## GRP Handrailing



GRP Handrailing and Grating Cover

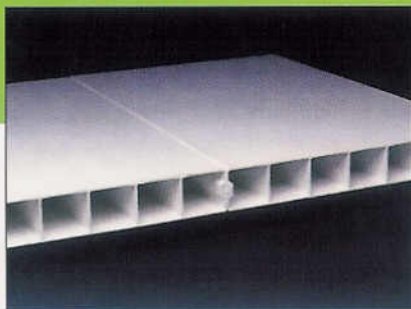


GRP Handrail

## GRP Covered Grating



GRP Grating Cover



GRP Grating Cover



Trench Cover

# Fiberglass Water Tank

玻璃纖維  
儲水箱

YEUNG'S GRP Water Tank / Cistern became very popular water storage medium recently. In the past, many housing complex, industrial development areas, buildings, hospitals and rural water supply used concrete and steel sectional tanks. The use of concrete and steel tanks, however, has their own particular disadvantages.

### Steel Tanks -

Corrode very easily and need repaint and repair frequently

### Concrete Tanks -

Easily cracks and leads seepage and taint. Algae will grow easily and contaminate water

# WRAS

Water Regulations Advisory Scheme

Bringing Clean Water For You



BS 6920  
Certificate No. 9711511

## YEUNG'S CAN PROVIDE AN ALTERNATIVE...



Combinable Water Tank for fresh water  
食水用組合儲水箱

21



Water Tank for flusing water  
咸水用儲水箱



Combinable Water Tank for sewage water  
污水用組合儲水箱

### Certifications

Our tanks are accredited and acclaimed by Water Research Centre (WRC) in the U.K. and Water Authority in Hong Kong. Also, the laminate of fiberglass water tanks are also being tested by the University of Hong Kong for the calculation of design, strength, durability, reliability and quality of GRP Tank.

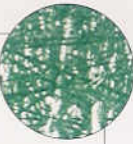
Durability: About 10-15 years lifetime with proper maintenance

	GRP WATER TANK	CONCRETE WATER TANK	STEEL	
			WELDED TYPE WATER TANK	PANEL TYPE WATER TANK
Water Quality	●	●	◆	●
Water Tightness	●	◆	▼	◆
Durability	●	◆	▼	◆
Flammability	●	◆	▼	▼
Maintenance	●	▼	●	●
Corrosion	●	●	▼	▼
Heat Insulation capability	●	●	▼	◆
Appearance	●	◆	▼	◆
Hygienic	●	●	◆	●
Easy Cleaning	●	◆	◆	◆
Light Weight	●	▼	▼	◆
Condensation	●	◆	◆	▼

● Excellent ● Good ◆ Fair ▼ Poor

# Fiberglass Decorative Products

玻璃纖維  
其他裝飾及產品



## FIBERGLASS FALSE CEILING

Fiberglass False Ceilings in curved or dome shape are more economical than the traditional false ceilings made by plywood. Fiberglass ceilings are non-corrosive and non-oxidised, particularly when the locations of the premises are near the sea.



Curved Ceiling 波浪形天花



False Ceiling in Sun Plaza 太陽廣場室內天花

Waffle Mould 石屎模



Concrete Feature manufactured using GRP Waffle Mould 三號幹線石屎裝飾

## FIBERGLASS SIGNATURE BRICKS AND FEATURES

G.R.P. can be employed for internal as well as external decorations. The durability properties of fiberglass laminates encourage people using more and more fiberglass components for their indoor and outdoor constructions. For example, the signature bricks and dolphin features gives Ocean Park an excellent impression to visitors and tourists. In addition, the weather resistance properties lead fiberglass to wider and wider scope of fiberglass in Hong Kong.



Signature Brick and Decorative Feature in Ocean Park 海洋公園簽名紀念牌

## FIBERGLASS WAFFLE MOULD

Fiberglass waffle mould or concrete mould will gradually replace existing mould, which have made by steel or plywood. A fiberglass waffle mould can normally be reused over 100 times and the concrete surface is extremely smooth to "F6" surface. Many architects and designers are more likely to use them for concrete production. Calculations and shop drawings are available on request.

22

## FIBERGLASS RUBBISH BIN

Yeung's also play an important role in environmental care by manufacturing rubbish and recycling bins. Their attractive shapes and colours not only remind people that environmental protection is vitally important, but also can improve the impression of your area.



Recycling Station for a green Hong Kong in Ocean Park 海洋公園環翠垃圾回收站

## QUALITY ASSURANCE

Our customers rely on Yeung's Fiberglass to provide products and services, on time, to meet their requirements. Each day we strive to continuously improve process and product quality and consistency.

Manufacturing and Quality Assurance then closely control each step of the production process -- from final design, through fabrication and shipping to installation, to ensure conformance to the customer's requirements.

All raw materials are evaluated to make sure that they meet Yeung's high quality standards. Regular physical inspection and measurements during fabrication -- dimensions, panel thickness, hardness, resin/glass content, and constant visual checks for defects -- document that the design criteria are met.

From start to finish, the YEUNG'S Standard of Quality assures that Yeung's Fiberglass Products and Services will meet your quality standards in every way.



楊氏玻璃纖維公司  
YEUNG'S FIBERGLASS COMPANY

(Government Approved Specialist Contractor)

RAISING FIBERGLASS STANDARDS

OFFICE: Unit F, 23<sup>rd</sup> Floor, CNT Tower,  
338 Hennessy Road,  
Wanchai, Hong Kong.  
Telephone: (852) 2893 8865 (4 Lines)  
Facsimile: (852) 2893 6321

寫字樓：  
香港灣仔軒尼士道338號  
北海中心23樓F室  
電話：(852) 2893 8865 (4 線)  
傳真：(852) 2893 6321

FACTORY: 1<sup>st</sup> Floor, Perfectech Centre,  
64 Wong Chuk Hang Road,  
Hong Kong.

工場：  
香港黃竹坑道64號  
威發中心一字樓全層

Web Site: [www.fiberglass.com.hk](http://www.fiberglass.com.hk)  
E-mail: [yeungs@fiberglass.com.hk](mailto:yeungs@fiberglass.com.hk)

網址: [www.fiberglass.com.hk](http://www.fiberglass.com.hk)  
電郵: [yeungs@fiberglass.com.hk](mailto:yeungs@fiberglass.com.hk)